

Daily Weather Update

Coastal Area Around The Sri Lanka

Information Fusion Center-Colombo

Amaladev

1901-2019

300

100

0

100

200

300

400

500

600

700

800

900

1000

1100

1200

1300

1400

1500

1600

1700

1800

1900

2000

2100

2200

2300

2400

2500

2600

2700

2800

2900

3000

3100

3200



Information Fusion Center
Colombo
Sri Lanka

Date 2026.03.23

FORMATION FUSION CENTER

WEATHER FORECAST FOR SEA AREAS AROUND THE ISLAND DURING NEXT 24 HOURS

Issued at 05.30 a.m. on 23 March 2026



**DEPARTMENT OF METEOROLOGY
SRI LANKA**

COLombo - SRI LANKA

CONDITION OF THE RAIN

Showers or thundershowers may occur at a few places in the sea areas off the coast extending from Colombo to Hambantota via Galle.

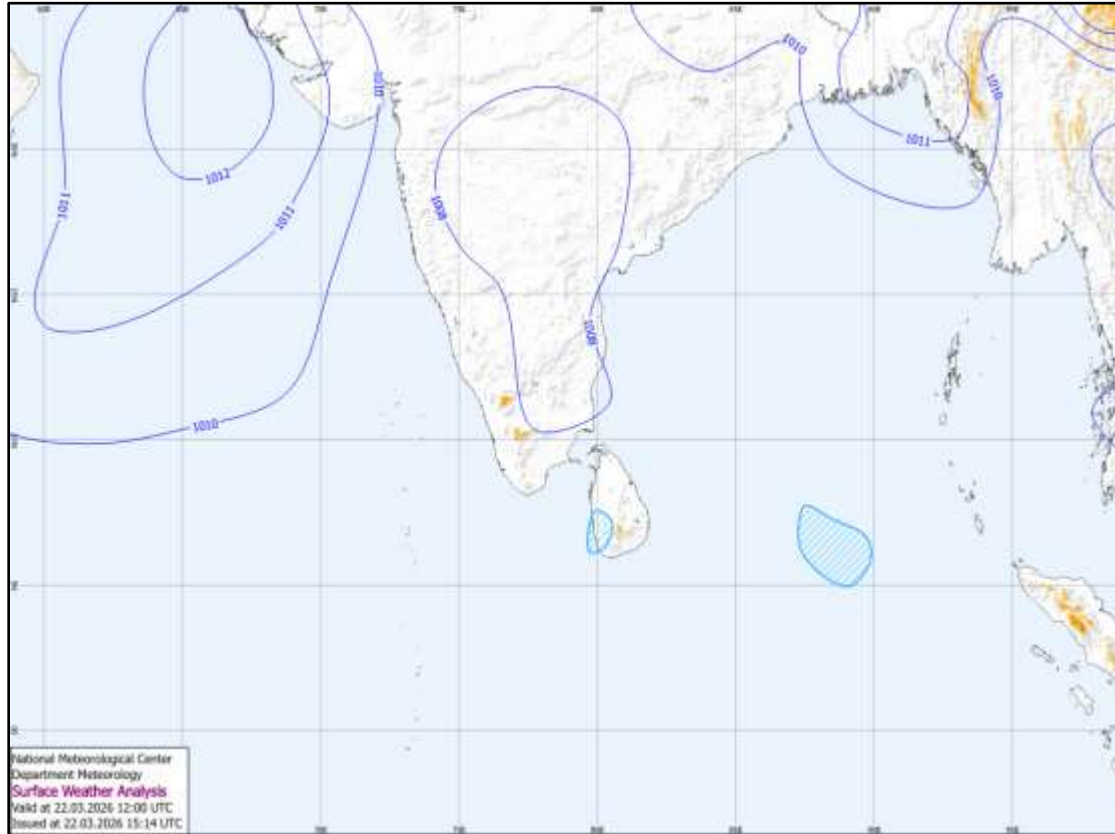
WINDS

Winds will be North-easterly or variable in direction. Wind speed will be (20-30) kmph.

STATE OF SEA

The sea areas around the island will be slight. Temporarily strong gusty winds and very rough seas can be expected during thundershowers.

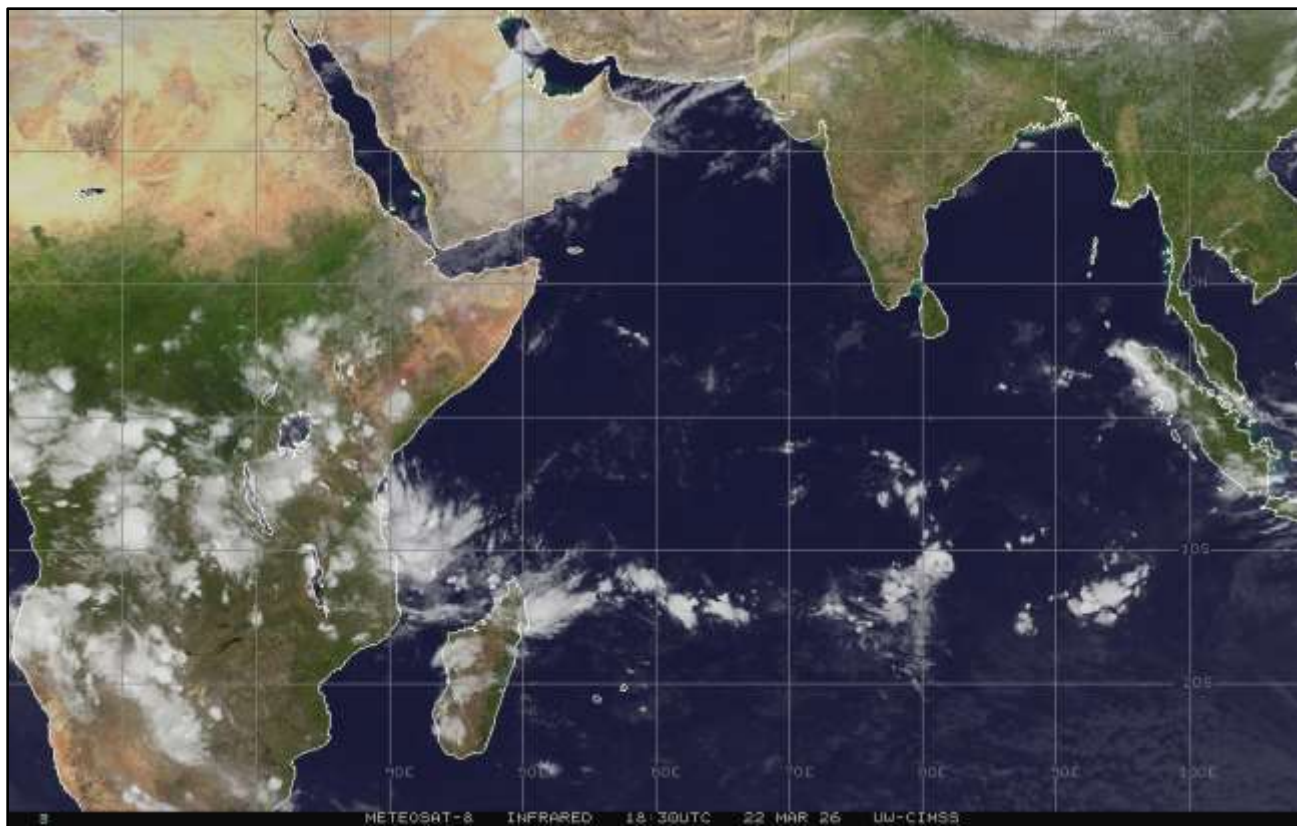
SURFACE ANALYSIS CHART



This analysis charts show the surface pressure pattern over Sri Lanka and the surrounding area. They display isobars (lines of equal pressure) and indicate areas of high (H) and low pressure (L) along with their central pressure value. Isobars are represented by solid blue lines, spaced every 1 hPa. High pressure is usually associated with mainly dry, settled weather with light winds, while low pressure is normally associated with unsettled weather, which is often wet and windy. The lower the pressure, generally the stronger the winds and the heavier the rain.

The map shows Coordinated Universal Time (UTC) and the local time is UTC+5.30.

SATELLITE IMAGE



23-Mar-26

IFC -Colombo



**Information Fusion Center
Colombo
Sri Lanka**

THANK YOU

The Officer Incharge
Information Fusion Centre - Colombo
Naval Headquarters, Colombo, Sri Lanka
+94 11 719 480 6
+94 74 120 4829
ifc@navy.lk
ifc.cbo@gmail.com